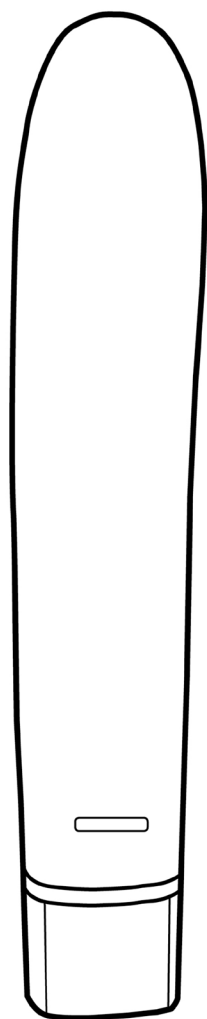




WITH  
**FLESHLIGHT®**



pearl

# User Manual

# CONTENTS

---

Overview	4
Product	5
Setup Guide	6
Preparation	12
Charging	12
Using Pearl	13
Aftercare	14
Safety	15
Disposal	15
Specifications	15
Help	16
Disclaimer	16

**Please read the user manual carefully.**

---

Follow the step-by-step instructions in the setup guide below to get started.

This process should take no more than 10 minutes from start to finish.

If you need any assistance with your setup, please click [here](#).

# OVERVIEW

---

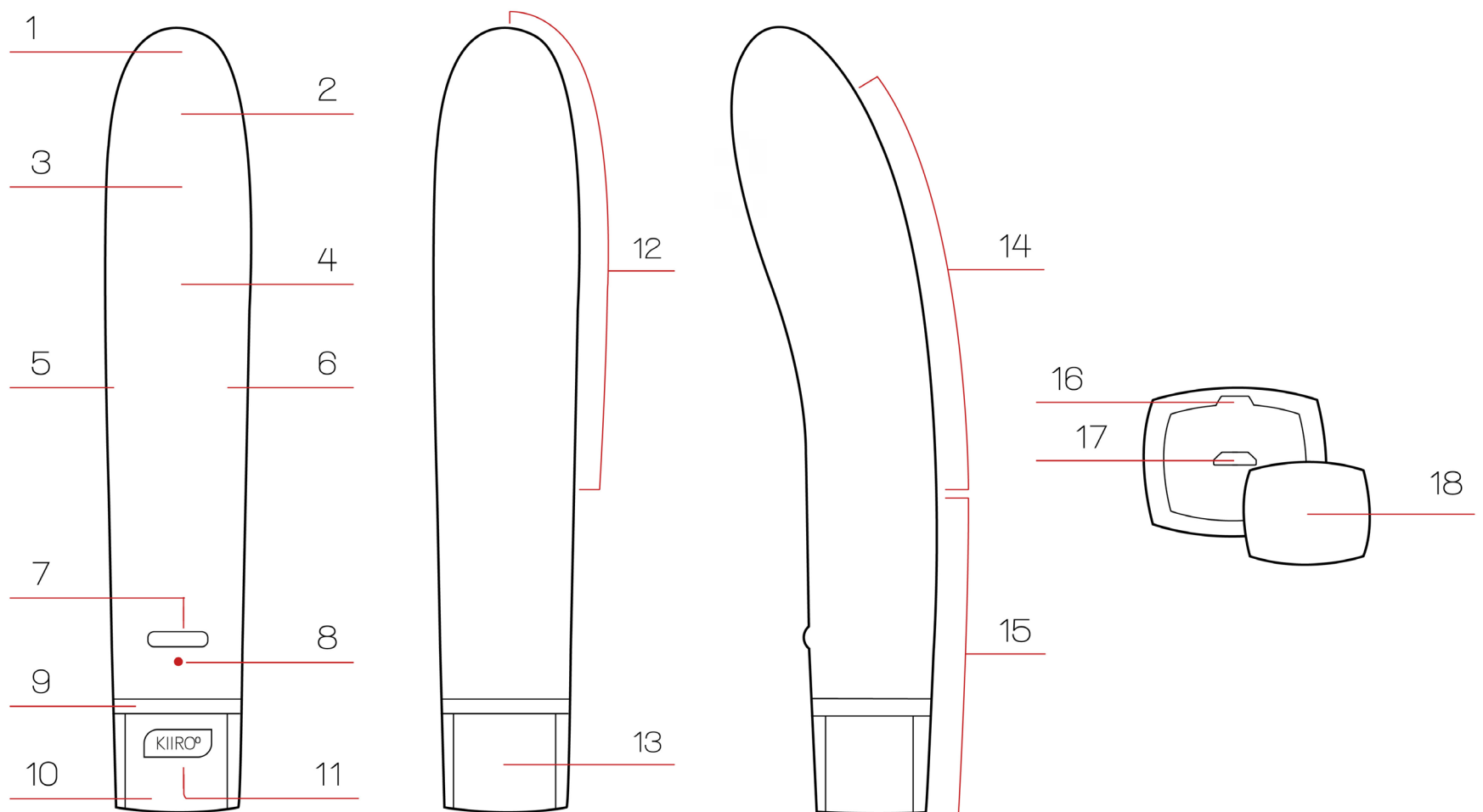
Pearl is the most advanced female vibrator for intimacy online, capable of keeping you and your partner connected over any distance. The ergonomic shape is designed to target the g-spot and ensures female pleasure combined with total control.

The outer layer is fabricated of hygiene silicone, while the core houses KIIR00's technologically advanced haptic pleasure system.

Pearl also works as a vibrator offline, to enhance foreplay in the bedroom or improve solo masturbation.



# PRODUCT



- |                         |                    |
|-------------------------|--------------------|
| 1. Tip                  | 10. Base           |
| 2. Hygiene Silicone     | 11. Front Logo     |
| 3. G-Spot Curve         | 12. Shaft          |
| 4. Motor                | 13. Back Handle    |
| 5. Left Side            | 14. Rings          |
| 6. Right Side           | 15. Handle         |
| 7. Multifunction button | 16. Cover Release  |
| 8. LED Light            | 17. Charging Port  |
| 9. Red Line             | 18. Charging Cover |

# SETUP GUIDE

---

**1** Make an account  
(See page 5)

---

**2** Register your device  
(See page 6)

---

**3** Download the platform  
(See page 7)

---

**4** Turn on KIIR00  
(See page 8)

---

**5** Connect with partner  
(See page 9)

# STEP 1



MORE

ABOUT

ACCOUNT



 \$0.00 (0)

## PREPARE TO SETUP

Remove your device, Micro USB cable and Authenticity Card from the box.

## CHARGE YOUR DEVICE

Charge your device, using the Micro USB cable supplied.

## MAKE AN ACCOUNT

To begin the setup process, go to [kiiroo.com](https://kiiroo.com) and select 'ACCOUNT' in the navigation menu, located in the top right of the screen.

Login to your kiiroo account, or make an account if you have not already done so.

If you have any problems with this step, click [here](#) for help.

Next Step

## STEP 2

### Register Device

Product\*

Authenticity code\*

Date of purchase\*

☒ I read and agree with the [Kiiroo Terms and Conditions](#)

REGISTER

### REGISTER YOUR DEVICE

Once you are logged in, the next step will be to register your device. At this point you will need your Authenticity Card ready.

### AUTHENTICITY CODE

Refer to the 13-digit number on the reverse of the Authenticity Card for the code. Make sure you enter it correctly.

Next, tick the box to accept the [terms and conditions](#).

### 1 YEAR WARRANTY

Select the 'REGISTER' button to begin your 1 year warranty and proceed to download the platform.

Next Step



## STEP 3



### DOWNLOAD PLATFORM

After registering your device, the platform will be available to download. Select the 'DOWNLOAD' button to proceed. Check here again in the future to see information regarding the latest versions available.

### OPERATING SYSTEM

On the download page, choose your operating system and select the 'DOWNLOAD' button. Save the file to your computer.

See if your operating system is compatible [here](#).

### INSTALLATION

Open the downloaded file and follow the regular installation process for your operating system. Remember, Mac and Windows run different installation processes.

If you have problems with installation, click [here](#) for help.

Next Step

## STEP 4



### POWER ON

When your device is fully charged, first remove the Micro USB cable and replace the grip clip.

Then, power on by pressing the multifunctional button for 4 seconds. A solid red light will show and Bluetooth will be active.

### BLUETOOTH

Turn on your computer's Bluetooth. A dongle can be used if your computer does not have in-built Bluetooth. You can purchase a dongle [here](#).

There is no need to pair your device, the platform does this automatically.

### OPEN & RUN

Open the KIIROO program. The platform will appear and search for your device. If it does not appear after 2 minutes, click [here](#) for help.

Next Step

## STEP 5

Join  
connection

Invite  
connection

### HOME SCREEN

When your device is successfully paired, the home screen menu will show two options; Invite partner and Join partner. If it does not appear, click [here](#) for help.

### JOIN OR INVITE?

You have two options to choose from, to create a secure connection between you and your partner.

The INVITE button generates a unique, 6-digit code to send to your partner.

The JOIN button allows you to enter a unique, 6-digit code, recieved from your partner.

Send and recive the unique codes via any other **private** form of communication (SMS, apps, email, phone call etc.)

If the connection doesn't work, click [here](#) for help.

# PREPARATION

---

Always use lubrication.

The lifespan of your pearl will be greatly increased with proper maintenance and care.

We suggest that you use lubrication with your Pearl in order to have the most comfortable experience. Always choose a water-based lubricant, as silicone lubricants can break down silicone toys. An oil-based lubricant, which is specially made for the vagina, is also an acceptable choice. Never use massage oil or hand cream as lubricants.

It is advised to have cleaning materials ready to clear any mess created, such as a towel or tissue.

---

# CHARGING

---

Before charging, make sure the charging port is free from water or lubricant residue. This can be cleaned with an antibacterial cloth.

1. Remove charging cover before charging.
2. Insert the MicroUSB into Pearl's charging port.
3. Insert the other end into a USB port. This can be a computer or charger (the charger should CE certified according to IEC 60335 norm.) - both will charge the device effectively.
3. Wait for the LED light to slowly. This indicates that Pearl is charging.
4. The LED light will glow solid when Pearl is fully charged.
5. When the battery is low, the LED indicator will prompt you to charge by pulsing again. You have 5 minutes to charge before the battery turns off and disconnects.

**Only use original chargers provided by KIIR00.**  
**Do not use the device whilst charging.**

# USING PEARL

---

## POWER

---

On / off is controlled by the button on the front of the device.

To turn on, press and hold for 4 seconds. To turn off, press and hold for 4 seconds.

Check the device is charged by pressing the multifunctional button.

A solid red LED indicates good battery, and a fast blinking light indicates battery is low.

## BLUETOOTH

---

To connect with Pearl, your computer must have Bluetooth. If it does not, a Bluetooth dongle is required.

Bluetooth is always active when Pearl is on. When Pearl is turned off, Bluetooth immediately disconnects.

## MODES

---

Pearl has five vibration modes: low, medium, high, slow pulse, and fast pulse.

To choose the desired mode, repeatedly press the multifunctional button to go through the cycle.

### 1 - low

The first mode produces a low vibration, that gently stimulates the user. This is perfect for first-time users to get used to the sensation of a vibrator. We rate the vibration power at a soft, 2/10.

### 2 - medium

This mode produces a slightly stronger vibration, but still remains on the softer side of the scale. This is a happy medium for many users, as we rate the vibration power at reasonable, 4/10.

### 3 - high

The strongest mode produces a firm rumble, focused on the G-spot curve. This will suit a confident pleasure product user very well, or anyone who requires a bit more stimulation. We rate the vibration power at a comfortable, 6/10.

### 4 - slow wave

This mode pulses slowly at a low frequency, and increases rapidly to a short, high frequency. The wave adds a playful variety to the modes of vibration, so try it out and see for yourself.

### 5 - fast pulse

This mode pulses on and off quickly, at a high frequency. We recommend this mode for a strong sense of targeted power.

You can do this as many times as you wish.

To stop any mode, just press the button to go through the cycle or hold for 4 seconds to turn off.

You can turn Pearl on before or after insertion, though it is easier to use Pearl's multifunctional button when Pearl is not inserted.

## HANDLING

---

Pearl is not a hands-free device. We recommend that you hold pearl by the black capped end, with a grip around the last inch of white hygiene silicone (where Pearl's button is located).

Pearl is intended for vaginal use only.

## LED INDICATOR

---

Pearl has a single LED light located near the base of the device. It has three modes:

1. Solid light  
Charged and Bluetooth Active
2. Slow blinking  
Charging and Bluetooth Disabled
3. Fast blinking  
Low battery. (5 mins left)

---

# AFTERCARE

---

Always clean Pearl thoroughly after each use.

Use warm water along with antibacterial soap, dish soap, or a specialized toy cleaner.

Hygiene Silicone is an easy material to clean and will last for years when properly taken care of.

# SAFETY

---

Avoid leaving your Pearl in direct sunlight and NEVER expose it to extreme heat. Store your device in the dust bag provided and keep it away from non-silicone toys.

Avoid submerging the device below 2m or leaving in liquids for longer than 5 minutes.

Never use cleansers containing alcohol, petrol or acetone.

Do not use heating appliances to dry the device.

Do not attempt to use Pearl anally.

The Bluetooth module is located in the handle. For personal safety and optimal reception, avoid inserting the handle (only use the top 13cm).

## WARNING!

Do NOT use your Pearl if:

- There are exposed electronic elements
- You are in a shower, tub, swimming pool, sauna, steam room etc.
- It is excessively hot to the touch

---

# DISPOSAL

---

While Pearl is made of eco-conscious materials, you should not dispose of Pearl in your waste bin. Like any electronic with a rechargeable battery, there are disposal regulations. These vary by city and local municipality. Be aware of how electronics are disposed of where you live. KIIROO suggests to ask at your local council center. Also consider that in your locality, Pearl may be considered bio-waste because of its intimate nature.

---

# SPECIFICATIONS

---

Materials:	POM, ABS, silicone
Finish:	Matte
Size:	190 x 30 x 30 mm
Weight:	123 grams
Battery:	LIPO 2200 mAh 3.7v 10C
Charging:	3 hours
User time:	1 hour

# HELP

---



How to make an account.

---

Enter your details in the boxes provided. Tick 'Touch Base with KIIRoo' if you want to receive our newsletter. Select 'GO' to make your account. The next page is your account, where you will find your devices, downloads and personal details.

Where do I find the Authenticity Code?

---

The Authenticity Code is located at the bottom, on the reverse side of the card supplied in the product box. It is 13 digits long.

I registered the wrong device, how do I cancel it?

---

Contact our customer support team by email or phone and we will easily remove the incorrect entry.

Which operating systems does kiiroo work on?

---

The platform works on OSX 10.8 or later, and Windows 7 or later. Previous software does not support the features of the program.

What process do I need to follow to install on my PC?

---

Click to open the file, a window will appear called Setup. Select the location you would like to save the program and your desktop icon preference. Then click install. When installation is finished, launch the Kiiroo program.

My device will not pair with my computer's Bluetooth. What do I do now?

---

Most importantly, the device must be charged and unplugged from the Micro USB cable. The device will only pair with Bluetooth wirelessly, and allow access to the platform. Open and run the program, then wait for 2 minutes. If it does not pair at all, turn everything off and repeat the process. There are help buttons to direct you to customer support.

What is a dongle?

---

A dongle is a small USB, capable of sending and receiving Bluetooth signals. It can be plugged into a USB port, to supply the device with a wireless connection.

Where do I buy a Bluetooth dongle?

---

You can buy a dongle from our website, or any high street electronics store. They cost ~\$20.

Can I use an external webcam?

---

Yes, any webcam that is properly connected to your computer will work with the platform.

The platform does not appear when I start the program.

---

This may take up to 2 minutes to load the first time. If it does not load at all, press ctrl + alt + del and shut down the program fully. Restart the program from your start menu, as normal.

The home screen menu does not appear.

---

Double check your Bluetooth and device are on, and paired properly. If they are not, turn off the platform, device and Bluetooth and start the process again.

I do not know how to send my 6-digit code.

---

If you have chosen to invite, then you will see a code. This code can be sent to your partner using a reliable contact method such as a phone call, SMS on mobile or email address.

I cannot connect with my partner using the 6-digit code.

---

First, check your connection with the internet and Bluetooth. If these are not working consistently then this will cause an error. If the connections are poor, turn off the platform and device and start the process again.

Did this answer your question? If not, scroll down to see more options.



# HELP

---



How to make an account.

---

Enter your details in the boxes provided. Tick 'Touch Base with KIIROO' if you want to receive our newsletter. Select 'GO' to make your account. The next page is your account, where you will find your devices, downloads and personal details.

Where do I find the Authenticity Code?

---

The Authenticity Code is located at the bottom, on the reverse side of the card supplied in the product box. It is 13 digits long.

I registered the wrong device, how do I cancel it?

---

Contact our customer support team by email or phone and we will easily remove the incorrect entry.

Which operating systems does kiiroo work on?

---

The platform works on OSX 10.8 or later, and Windows 7 or later. Previous software does not support the features of the program.

What process do I need to follow to install on my Mac?

---

Open the file in your downloads. Drag the KIIROO icon into the applications icon. Next eject the Kiiroo disk, which should appear on your desktop. If a window for unidentified developer appears, see the next page for help

My device will not pair with my computer's Bluetooth. What do I do now?

---

Most importantly, the device must be charged and unplugged from the Micro USB cable. The device will only pair with Bluetooth wirelessly, and allow access to the platform. Open and run the program, then wait for 2 minutes. If it does not pair at all, turn everything off and repeat the process. There are help buttons to direct you to customer support.

What is a dongle?

---

A dongle is a small USB, capable of sending and receiving Bluetooth signals. It can be plugged into a USB port, to supply the device with a wireless connection.

Where do I buy a Bluetooth dongle?

---

You can buy a dongle from our website, or any high street electronics store. They cost ~\$20.

Can I use an external webcam?

---

Yes, any webcam that is properly connected to your computer will work with the platform.

The platform does not appear when I start the program.

---

This may take up to 2 minutes to load the first time. If it does not load at all, go to APPLICATIONS > UTILITIES > ACTIVITY MONITOR. Find the KIIROO program and Force Quit. Now, try to start the program again.

The home screen menu does not appear.

---

Double check your Bluetooth and device are on, and paired properly. If they are not, turn off the platform, device and Bluetooth and start the process again.

I do not know how to send my 6-digit code.

---

If you have chosen to invite, then you will see a code. This code can be sent to your partner using a reliable contact method such as a phone call, SMS on mobile or email address.

I cannot connect with my partner using the 6-digit code.

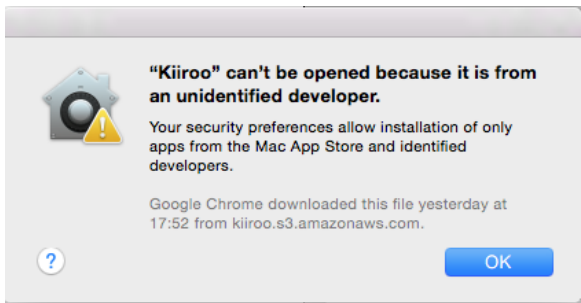
---

First, check your connection with the internet and Bluetooth. If these are not working consistently then this will cause an error. If the connections are poor, turn off the platform and device and start the process again.

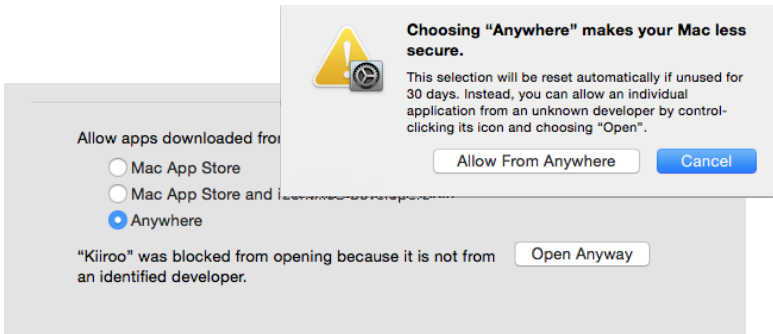
Did this answer your question? If not, scroll down to see more options.

I see this window, now what do I do?

Go the apple in the top left corner of the screen, select System Preferences and click on Security & Privacy.



Here you will be able to choose which applications to allow. Temporarily allow KIIR00 to install. You may need your computer password handy.



If you have any further problems with setup and installation or issues with using your device, do not hesitate to contact our customer service team. Our technical team is there for your support, to explain problems in detail and make your online experience run as smoochy as possible. We try to answer all questions within 48 hours of receiving them. Opening hours are Mon - Fri, 6AM - 8PM CST. Calls cost \$1 per minute.

[www.kiirroo.com](http://www.kiirroo.com)

[KiirrooSupport@fleshlight.com](mailto:KiirrooSupport@fleshlight.com)

+1 888-961-9919

# DISCLAIMER

We, KIIR00, make no medical claims with our devices. Our devices are not to be used by or on minors (anyone under 18), or anyone who is unable or unwilling to express consent. Do not use KIIR00 devices on inflamed or irritated areas. Follow all directions as set forth by the manual, and do not attempt to make any technical adjustments to your KIIR00 device at home. KIIR00 will not be held responsible for any undesirable results of misuse.